

2020- 2029

WWF

2020 8

15.15

,

4.77

3

m'

4
18.82

" "

2009 3

09/10/2019

1

5

2

7

"

"

8

9

10

(

109° 26 24

109° 44 41

19° 20 42

19° 51 06

" "

109°

33 35

19° 34 12

120

22

183

10 15



15

3

85

1.

7

7

4

5

22

CITES

2019	31.50	23.04	97.53
	13.35‰	66.03	7.36‰
	92.07	5.99‰	
20	7%	52.9%	93%
	940	760	

ð

5



	189555.7		1224185.89
	13382.6	7.1%	92875.11
7.6%			
	176173.2	92.9%	1131310.78
92.4%			

	189555.7		1224185.89
	13382.6	7.1%	92875.11
7.6%			
	176173.2	92.9%	1131310.78
92.4%			

	189555.7		1224185.89
	188244.5	99.31%	1223835.55
99.97%			
	1274.2	0.67%	
	37.0	0.02%	350.34
0.03%			

	189555.7		1224185.89
/	32368.3		1274.2
17.1%	8920.18		0.7%
	1442.2	0.8%	6556.40
0.5%			

	10928.6	5.8%	90102.71
7.4%			
	68658.9	36.2%	416417.53
34.0%			
	76157.7	40.2%	702189.06
57.4%			
			188281.6
1224185.89		6.50	188244.5
	1223835.55		6.50
37.0	350.34		9.46
			3.32%
			40602
		3.32%	40593
2.68%		9	

- 1
- 2
- 3
- 4

- 1
- 2
- 3

)

É#§

(2015-2030)

() (2014 1
(2009 3)

"

"

'

"

"

be
iv

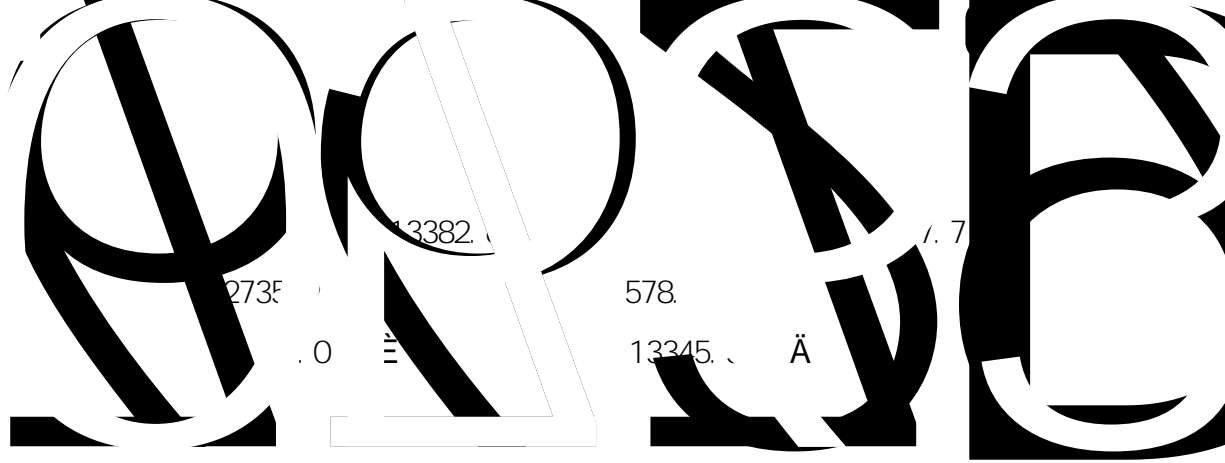
8	20	20
9	3000	3000

0

13382.6

37.0

è



2735

13382

1.7

578

.0 È

13345. Ä

176431. 4

176173. 2 -

258. 3 Ù

"

"

FSC®

FSC®

19

PR107

7-33-97

7-20-59

“ “ “ “ “

74

36145

34791

1355

7

8

9

7

8

3

295359

36220

259139

1587006

[2013] 114

	2015	2019		9432	6974	7983	9430
8958							8000
		8500					

2

2

3

4

5

6

7

8

9

1

2

3

4

5

10

6

6.1

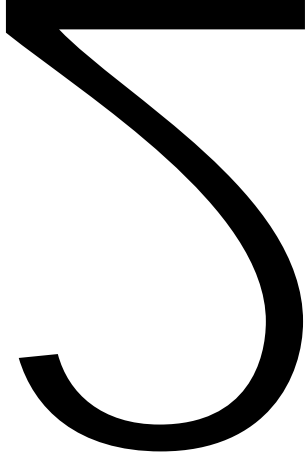
50

6.2

6.3

7

7.1



3

2

8.2

8.3

"

"

"

"

—

—

9

10

6

12 14

3

11

12

13

14

14. 1

14. 2

14. 3

14. 4

35961

399749

279824

3596

39975

27982

1

1.1

1.2

1.3

1.4

1.5

2

2.1

2.2

2.3

2.4

2.5

2.6

FSC

1

1.1

1.2

1.3

2

2.1

2.2

2.3

2.4

2.5

1

1.1

1.2

1.3

2

2.1

2.2

2.3

1

1.1

1.2

1.3

1.4

2

2.1

2.2

2.3

2.4

2.5

2.6

1

1.1

1.2

1.3

1.4

1.5

1.6

2

2.1

2.2

2.3

2.4

.3

2.1

2.2

2.3

60 70

44

70

3

2

1329

66.5

68.7

6

13991

1250

5293

529.3

WORLDWIDE

e

} Ÿ > „

1.

2.

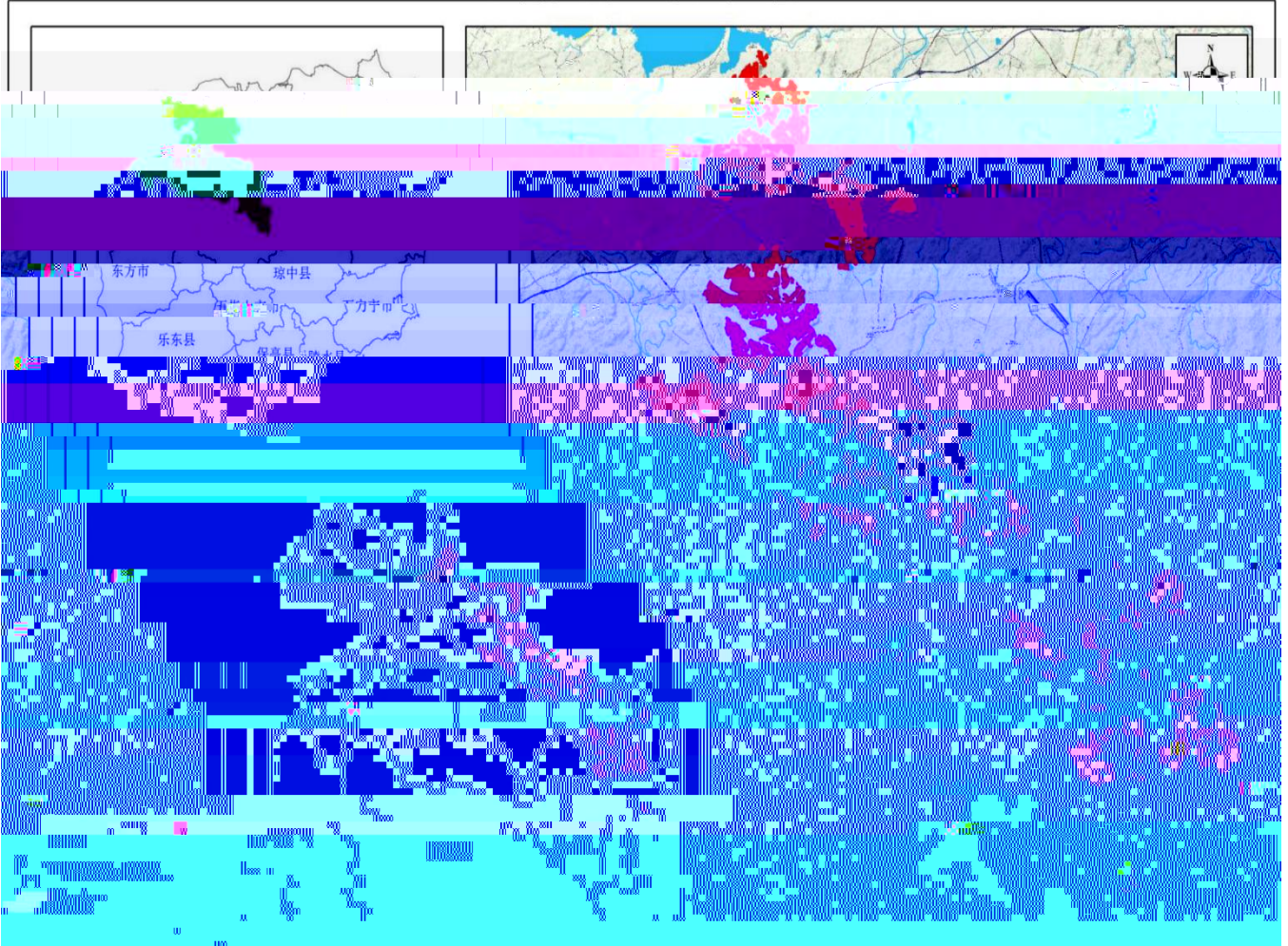
3.

4.

5.

6.

7. FSC®



FSC®

